



STATE OF WYOMING CORNER RECORD

(In compliance with the CORNER PERPETUATION AND FILING ACT, Wyoming Statutes, 1997 Section 33-29-140, et. seq., and the Rules and Regulations of the Board of Registrations for Professional Engineers and Professional Land Surveyors)

EAST QUARTER CORNER SECTION 17, T. 17 N., R. 62 W., 6TH P.M., LARAMIE COUNTY, WYOMING

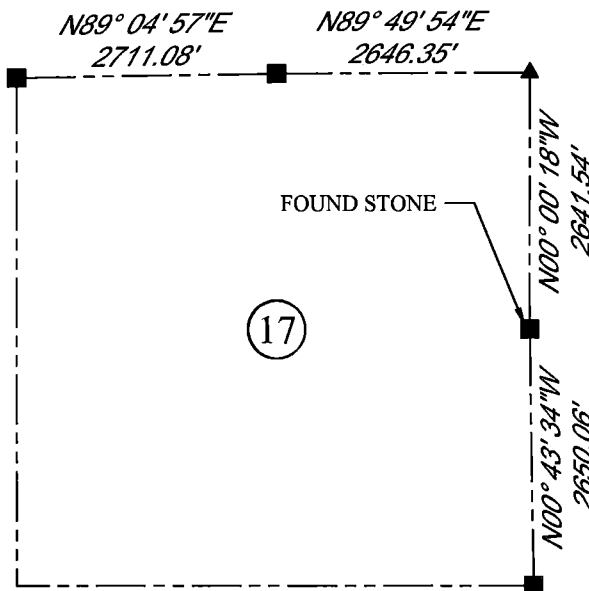
GLO: LIMESTONE 18X12X8 SET 10 IN. DEEP. MARKED 1/4 ON W. SIDE FOR 1/4 SEC. COR.

FOUND: FOUND 18X11X9 LIMESTONE IN FENCE LINE. NO EVIDENT MARKS.

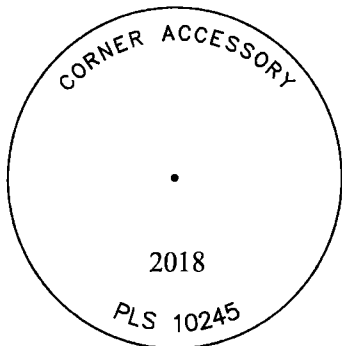
SET: A 3.25" ALUMINUM CAP ON #5 REBAR, 6" ABOVE SURFACE, MARKED AS SHOWN ON N. SIDE OF FOUND SET SANDSTONE, W. SIDE OF N/S/E FENCE CORNER.



SCALE: NONE
 NORTH DETERMINED BY
 G.P.S OBSERVATIONS



SET A 3.25" ALUMINUM CAP



LEGEND:

- FOUND BLM CAP
- FOUND USFS CAP
- FOUND STONE
- FOUND PRIVATE MONUMENT
- ◆ CALCULATED POSITION
- ▲ SET MONUMENT (LS10245)
- SECTION LINE

DATE OF FIELD WORK: 10/05/2018 OFFICE REFERENCE: MERIDEN

CROSS INDEX DIAGRAM

	1	2	3	4	5	6	7	8	9	10	11	12	13	14	15	16	17	18	19	20	21	22	23	24	25
A																									
B																									
C		6																							
D			5																						
E				4																					
F					3																				
G						2																			
H							1																		
I																									
J																									
K																									
L																									
M																									
N																									
O																									
P																									
Q																									
R																									
S																									
T																									
U																									
V																									
W																									
X																									
Y																									
Z																									

WOOD
 2615 AVIATION DRIVE
 SHERIDAN, WY 82801
 PH: 307-675-6400



THIS CORNER RECORD WAS
 PREPARED BY ME OR UNDER
 MY DIRECTION AND
 SUPERVISION,
 SEAL AND SIGNATURE

